

CARDEROCK SPRINGS



AN EDMUND J. BENNETT ASSOCIATES COMMUNITY



Edmund J. Bennett



▲ living room



garage ▲



rear elevation ▲

front elevation ▼



ity, give you room for suitcases and hat boxes galore. Even the baths have copious linen and medicine storage. And the kitchen cabinets seem endless. Clutter is eliminated. We provide for storage of things within easy reach of the place you use them. You will find garages built into three models; we make them optional on the other two.

The plan is the generator. Without a plan, you have a lack of order and wilfulness. The plan holds in itself the essence of sensation.

LE CORBUSIER

Planning For Over-all Beauty: The modern concept of environmental planning considers the community as a whole with each home contributing to its over-all beauty. Carderock Springs is another outstanding success from the standpoint of land planning. Our lots are at least 100 feet wide and average one-half acre in size. We created charming private areas with private and public cul-de-sacs. Our curvilinear streets and T-intersections add to the pleasing appearance and traffic safety of the community. Every house is neatly sited according to the trees and terrain on its lot. Power lines are underground. TV aerials are nowhere to be seen.



THE HILLCREST

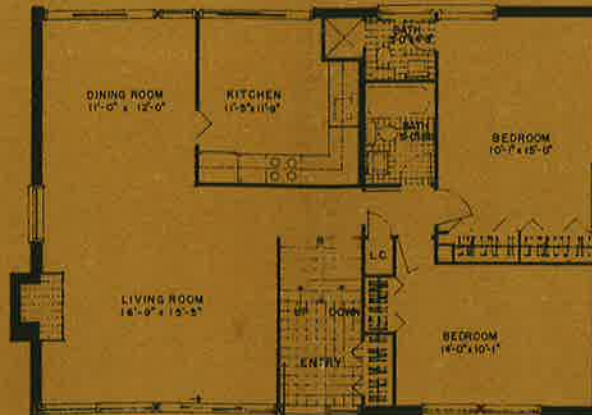
A bi-level design with a mid-level entry and two balconies gracing the exterior. One is outside the living room to the front. The second, outside the dining room and kitchen with a view to the woods in the rear, provides a pleasant outdoor eating area. There are four twin-sized bedrooms and three tiled bathrooms. The mid-level entry is private from the two living levels. The living room and recreation room each have fireplaces. There is a total of 2,370 square feet. The garage is optional.



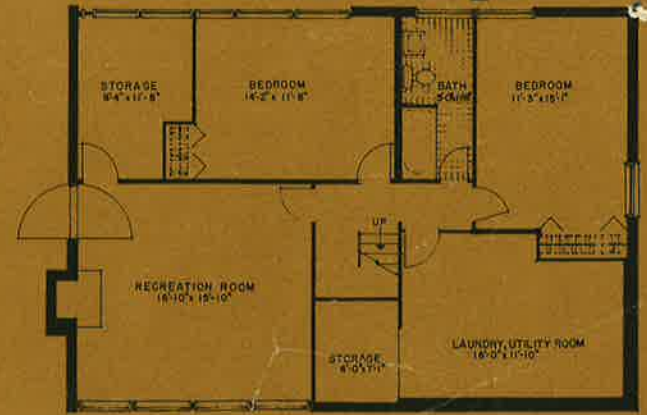
rear elevation ▼



upper level



lower level



▲ front elevation

A Location Of Convenience: Schools...For your children's education, some of the finest schools of the metropolitan area are nearby. The newly opened Carderock Springs Elementary School adjoins the community. Herbert Hoover Junior High and Winston Churchill Senior High are a short distance away. The new Holton Arms School for Girls on River Road, the Landon School for Boys and the Primary Day School are excellent nearby private schools. Our Lady of Mercy parochial school is on Bradley Blvd. one mile away.



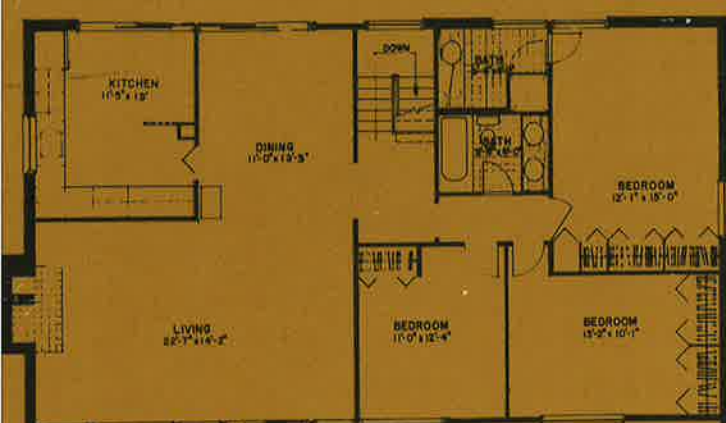
Carderock Springs Elementary School

Churches, Shopping, Recreation...You will find the church of your choice among the nine houses of worship in the vicinity. Your shopping needs will be met at the new Westwood Shopping Center or at the Potomac Shopping Center, both on River Road. Only minutes away are the stylish fashion stores—Woodward and Lothrop, Lord and Taylor, Julius Garfinckel, and Saks Fifth Avenue. Theatre goers will enjoy the summer programs at Shady Grove Music Fair, north on Interstate 70S. The Chesapeake and Ohio Canal National Park offers fun for skaters in winter, and is ideal for canoeing, fishing and picnicking in warm weather, and for hiking year 'round.

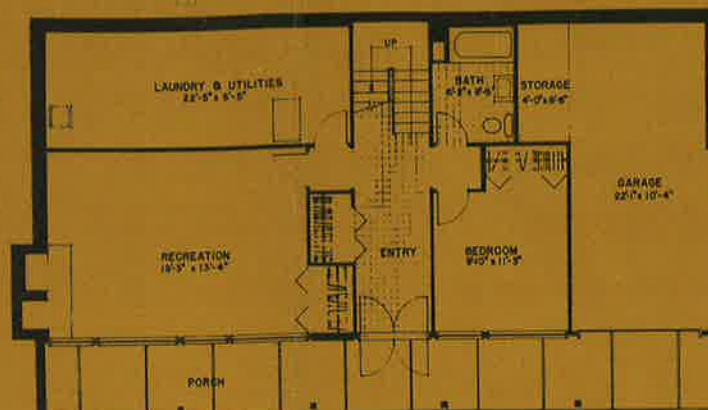
Transportation...Commuting is no chore in Carderock Springs. The Capital Beltway and George Washington Memorial Parkway

THE OVERLOOK

This design has received national design awards three times, the most recent from McCall's magazine. It includes four bedrooms, three baths, large laundry and storage area, balcony off the living room and a garden patio reached through sliding doors from the dining room and kitchen. There are fireplaces in the living room and recreation room. A covered entry porch the full width of the house leads to a 16 foot entry foyer. Living space totals 2,640 square feet. Garage is included.



upper level



lower level



rear elevation ▲

▼ front elevation



afford motorists a drive unspoiled by billboards and unimpaired by stop lights. Travel time to the Pentagon is 20 minutes, to the State Department, 25 minutes, and National Institutes of Health, 8 minutes. Air-conditioned express busses make regular runs from our entrance to downtown Washington in 30 minutes.

Exclusive Recreational Facilities: "Tennis anyone" and "Everybody in the pool" are familiar cries at the Carderock Springs Swimming and Tennis Club. The clubhouse provides the ideal meeting place for Scouts, civic meetings, dances and parties. Your new home purchase includes membership in this unique year round recreational facility.

Three things are to be looked to in a home: that it stand on the right spot; that it be securely founded; that it be successfully executed.

JOHANN
VON GOETHE

Talent and Taste Abound: We are pleased that so many people of discriminating taste have chosen Carderock Springs homes. A wide spectrum of the professions now represented—journalists, physicists, business executives, lawyers, government administrators, economists, architects, psychiatrists, to name a few—agree that you can make no better choice. You are invited to select your home today.



THE PINEVIEW

An imposing two-story house 72 feet long. The lower level provides a study and an acoustically separated recreation room in addition to a separate dining room. The upper level has four bedrooms, a large balcony off the master bedroom, and a study alcove. It contains 2,470 square feet plus full basement. A garage is included.

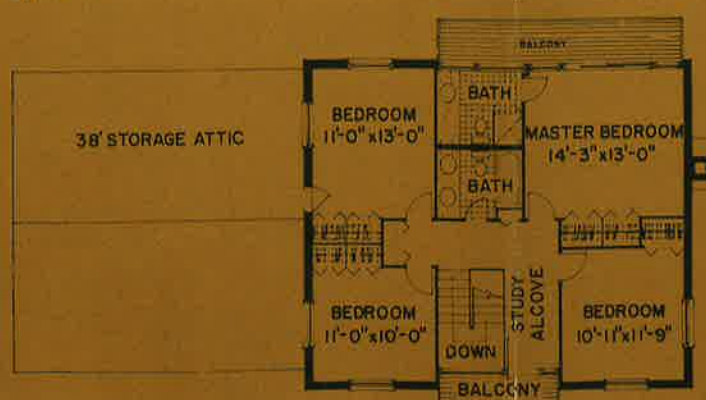
ices
ered
width
to a 16
iving
10 square
included.



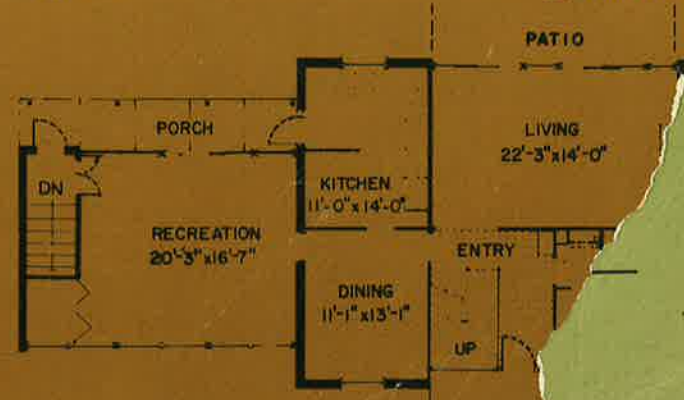
entrance ▼



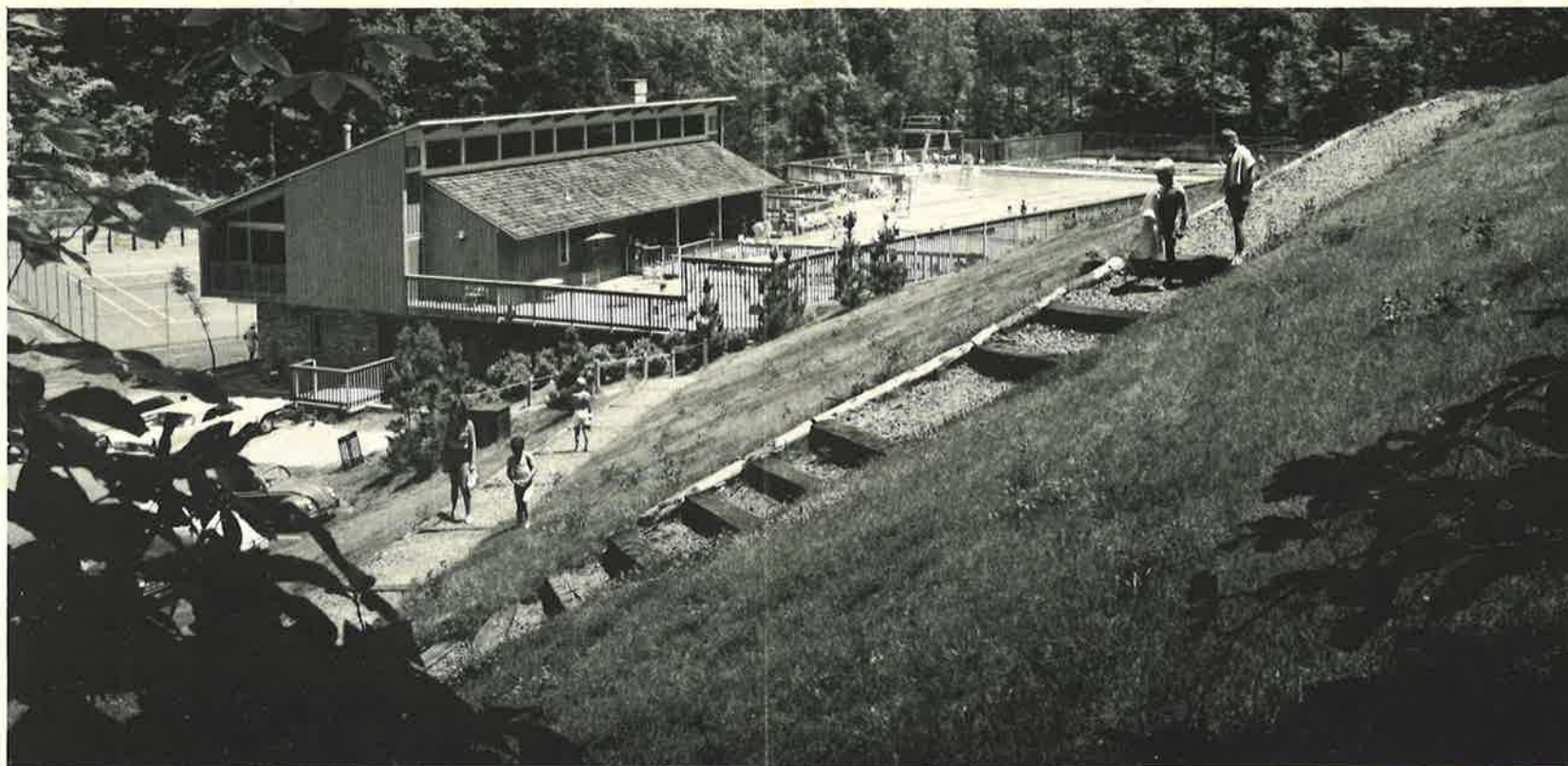
upper level



lower level



▲ front elevation



CARDEROCK SPRINGS SWIMMING AND TENNIS CLUB

Carderock Springs Swimming and Tennis Club — a non-profit membership corporation — provides a year round community center for Carderock Springs home owners. Facilities include three swimming pools, two tennis courts, an all-weather basketball and play court, a beautiful clubhouse, nature trails and picnic grounds with plenty of room for recreation and relaxation on its 9.4 acres for residents of all ages. When you purchase a new home in Carderock Springs you automatically become a member.

Club facilities are in a wooded country site of Carderock Springs, secluded by gentle slopes on every side. The clubhouse contains men's and women's dressing rooms with showers on the lower level. The upper level has a snack bar and a large covered porch overlooking the pool area. A large multi-purpose room, 64 ft. by 30 ft. with a handsome fireplace, overlooks the Club's two all-weather tennis courts. The club room can seat up to 200 people. Skilled swimmers enjoy the 25 meter pool with 7 competition lanes and a diving L with one meter and three meter boards; small fry have safety and fun in a junior pool; and tots have their own wading pool.

Attractive functional materials have been used in the clubhouse. The ceiling of the main house is exposed fir plank and

beam. On the exterior, rough sawn redwood board and batten pattern siding complements the used brick. Hand split cedar shakes give the roof a warm textured look. The architects, Keyes, Lethbridge and Condon, AIA, who also designed Carderock Springs homes, have detailed an attractive wood fence to enclose the pool area. The asphalt surfaced parking lot will accommodate up to 76 cars.

The Club activities reflect the interest of the members as well as the physical facilities available. The Club is much more than just a swimming and tennis club. With the active support of the members it is also a community and social center on a year round basis. The clubhouse multi-purpose room serves a variety of uses: as a meeting room, teen-age game room, bridge room, arts and crafts room, and social activity room. The use of the grounds is not limited to the summer months. Picnicking, tennis, basketball games and just plain relaxing out-of-doors are done year round.

There is room on the 9.4 acre wooded site for two additional tennis courts to be constructed as needed. The grounds also contain enough space to build an ice skating pond later.



Quality Materials and Fine Workmanship Add Value and Appeal:

All materials and equipment have been carefully selected to reduce maintenance, add to the comfort and convenience of living and give lasting value. They have been installed by skilled craftsmen working under expert supervision and exacting specifications. Buyers are protected, first, by our intensive inspection system that assures quality work and, second, by a written warranty against defects. Principal materials and equipment included at no extra cost are:

Air conditioning by Lennox . . . For year 'round comfort, a dustfree home, better health for hayfever sufferers.

Aluminum, foil-backed Fiberglas insulation . . . reduces heating costs in winter, cooling costs in summer, puts you in a comfort "envelope".

Plastic faced kitchen cabinets . . . for beauty, easy maintenance.

Hardwood chopping block . . . for the homemaker's convenience.

A two-door, 14 cu. ft. Frigidaire refrigerator . . . for complete cold food storage.

Extra wide built-in electric oven . . . for the widest turkey pan.

Hood-fan with grease filter by Emerson-Pryne . . . takes out cooking odors quickly.

Matching crystalline-glazed American-Olean ceramic tile on floors and walls of baths . . . give durable finish and color continuity, better design "scale".

Stainless steel kitchen sink with single-lever faucet, Frigidaire disposer and dishwasher.

Waterproof vinyl-plastic bath wall coverings . . . for lasting beauty, easy cleaning.

Two lavatories in family bath . . . doubles "rush-hour" capacity.

Push-pull single dial American-Standard faucets give instant temperature control.

200 amp electrical power . . . for all future needs.

Select Plumly red oak hardwood flooring . . . for uniform finish and durability.

Kiln-dried lumber . . . eliminates cracks from shrinkage.

Ten year warranty, 40 gal., glass-lined, hot water heater with high recovery rate for all hot water needs of a 3-bath house.

Plastic toilet seats with telescoping lid . . . will not discolor or peel.

Large bathroom mirrors for all make-up needs.

Aluminum sliding windows with integral weather stripping . . . are completely airtight, easy to open, can be lifted out to clean and won't rust or rattle.

Aluminum screens on windows and doors to outside . . . permit insect-free living in warm months.

Rust-proof nails on exterior walls and roof; barbed, "ringed" and threaded nails for interior fastening assure a tight, strong, lasting structure.

Adhesive application of gypsum board virtually eliminates nail "pops" and cracks in finish.

Handsome light fixtures . . . providing proper light.

EVERY HOME CARRIES A ONE YEAR WRITTEN WARRANTY.



CARDEROCK SPRINGS

Directions: From Northwest Washington—out River Road ½ mile beyond the Capital Beltway interchange to Carderock Springs entrance. From Virginia—the Capital Beltway over Cabin John Bridge to River Road (Exit 16) ½ mile to Carderock Springs entrance. Open daily.

**KEYES, LETHBRIDGE
& CONDON, A.I.A.**
Architects

THURMAN DONOVAN, A.S.L.A.
Land Planner and
Landscape Architect

DORRIS W. HARRIS
Color Coordinator



**NATIONAL
MERIT AWARD
WINNERS**

EDMUND J. BENNETT ASSOCIATES
7315 Wisconsin Avenue
Bethesda, Maryland 20014
Sales: 365-1515

